

## Worm gear winch WW2000-3000-4000-5000 ..D

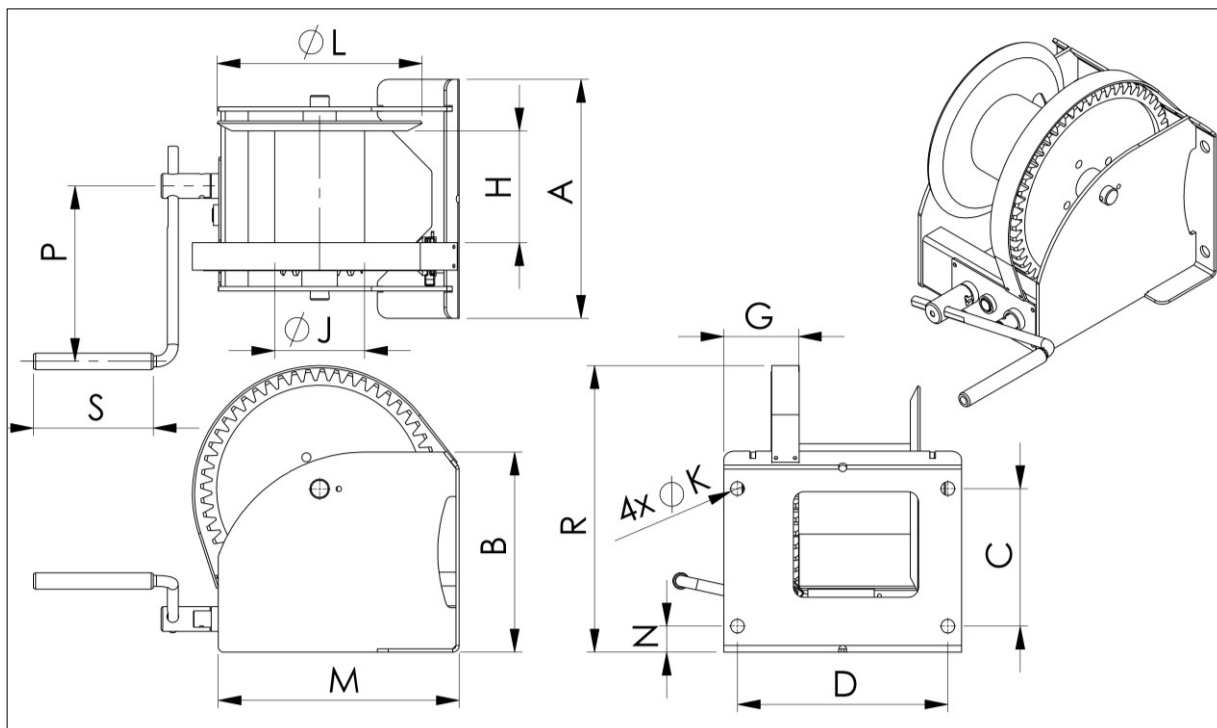


### Hand operated worm gear winch:

- robust and safe hoisting winch, with two speeds
- static safety factor of 4
- square worm-wormwheel transmission, and maintenance-free bearing
- cable outlet on top or rear
- adjustable crank from 250 to 380 mm, with ergonomic plastic hand grip
- load pressure brake with double ratchet system
- standard paint finish 1 layer (60-80 Micron), or zinc-plated finish (6 – 8 Micron)
- grooved drum as extra option (GD instead of D)
- 2 cable compartments as extra option (2D instead of D), multi compartments upon request
- in compliance with EN 13157, DIN 15020

# Technical specifications

## WW2000-3000-4000-5000 ../D



### TYPE

Type	Mounting	Material	Remarks
WW2000 GR/D	Wall, 4x M20 class 8.8	Painted finish	RAL 7044 (silk grey)
WW2000 EV/D	Wall, 4x M20 class 8.8	Zinc-plated finish	
WW3000 GR/D	Wall, 4x M20 class 8.8	Painted finish	RAL 7044 (silk grey)
WW3000 EV/D	Wall, 4x M20 class 8.8	Zinc-plated finish	
WW4000 GR/D	Wall, 4x M20 class 8.8	Painted finish	RAL 7044 (silk grey)
WW4000 EV/D	Wall, 4x M20 class 8.8	Zinc-plated finish	
WW5000 GR/D	Wall, 4x M20 class 8.8	Painted finish	RAL 7044 (silk grey)
WW5000 EV/D	Wall, 4x M20 class 8.8	Zinc-plated finish	

### DIMENSIONS (mm)

Type	A	B	C	D	G	H	J	K	L	M	N	P	R	S
WW2000	410	310	196	360	137	176	133	25	312	383	45	380	420	220
WW3000	436	365	251	386	137	204	165	25	376	443	47	380	527	220
WW4000	436	365	251	386	137	204	165	25	376	443	47	380	527	220
WW5000	436	425	316	386	137	200	219	25	437	495	60	380	604	220

### SPECIFICATIONS

Technical specifications	WW2000	WW3000	WW4000	WW5000
Capacity:				
1 <sup>st</sup> cable layer	2000 kg	3000 kg	4000 kg	5000 kg
last cable layer	1129 kg	1861 kg	2390 kg	3165 kg
Crankforce 1 <sup>st</sup> cable layer	22(12) daN	27(14) daN	35(13) daN	58(17) daN
Hoisting length by one rotation of crank , 1 <sup>st</sup> layer	12(6) mm	11(6) mm	11(4) mm	12(4) mm
Maximum cable storage	46 m	52 m	52 m	40 m
Diameter cable	13 mm	16 mm	16 mm	20 mm
Min. breaking force of cable	106 kN	161 kN	179 kN	252 kN
Own weight	60 kg	78 kg	80 kg	117 kg